



E-4 SANITARY SEWER
SAWS Job No. 19-1548
SAWS Solicitation No. CO-00376

ADDENDUM NO. 2
December 18, 2020

To Bidder of Record:

This addendum, applicable to work referenced above, is an amendment to the bidding documents and as such will be a part of and included in the Contract Documents. Acknowledge receipt of this addendum by entering the addendum number and issue date in the space provided in the submitted bid proposal.

RESPONSES TO QUESTIONS

QUESTION 1: Is there a tree stand delineation plan for the project?

RESPONSE: There is a tree plan available for the project. It has been posted at the following address:

https://apps.saws.org/business_center/contractsol/Drill.cfm?id=3908&View=Yes

QUESTION 2: Can we leave any of the excess spoils on-site?

RESPONSE: No, all excess spoils must be removed from the site.

QUESTION 3: There's no detail for what should be done with the abandon in place manholes. Do we fill them up with rock, dirt, or flowable fill?

RESPONSE: The Contractor should follow the San Antonio Water System Standard Specification for Construction Item No. 862 "Abandonment of Sanitary Sewer Main and Manholes" for requirements.

QUESTION 4: The irrigation removal & replacement is a LS item. Do you know about what size the irrigation line is or approximately how many feet run near our proposed lines?

RESPONSE: Irrigation was found during field investigations and was noted to be within the work area. The pipe sizes and lengths are unknown. Any damage to the existing irrigation improvements shall be restored substantially to the same condition that existed prior to construction.

QUESTION 5: Do you anticipate extending the bid due date?

RESPONSE: Not at this time.

QUESTION 6: What additional details are you willing to provide, if any, beyond what is slated in the bid documents concerning how you will identify the winning bid?

RESPONSE: SAWS will select the offeror that offers the best value for SAWS. In determining best value, SAWS is not restricted to consider price alone, but will consider the other factors stated in the evaluation criteria set out in the Request for Competitive Sealed Proposal.

QUESTION 7: Was this bid posted to the nationwide free bid notification website at www.mygovwatch.com/free?

RESPONSE: No it was not.

QUESTION 8: Other than your own website, where was this bid posted?

RESPONSE: The bid was advertised in a local newspaper, Hart Beat.

QUESTION 9: Could you please provide the existing manholes (to be abandoned) flow lines & rim elevations?

RESPONSE: Contactor can utilize the information found on the SAWS Sewer Block Maps 182640, 184640, 184642, and 186642 (see attached) for the information requested for the existing manholes identified to be abandoned.

QUESTION 10: Will polymer concrete be bid as an alternative to fiberglass manholes?

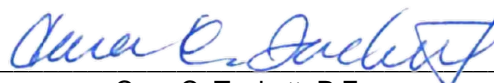
RESPONSE: Respondents shall provide a price based on the advertised Plans and Contract Documents. Alternatives should be submitted in the innovative ideas for cost savings section of the proposal (see SIR – sec. 3.a.iv). with the best valued Respondent selected, SAWS will negotiate any changes to scope.

END ADDENDUM 2

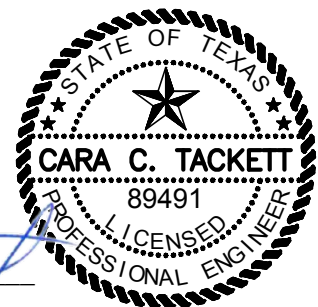
This Addendum, is six (6) pages in its entirety.

Attachments:

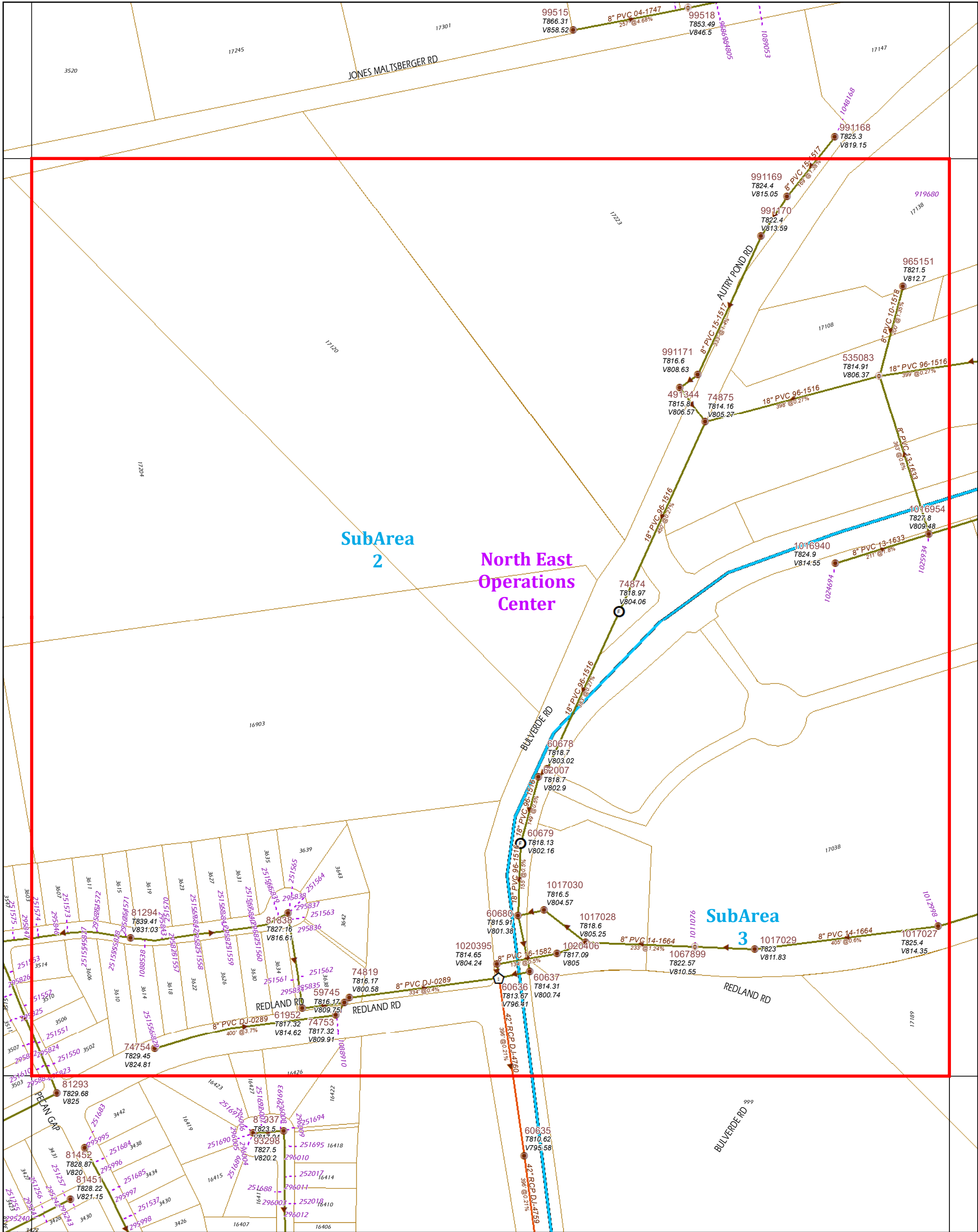
SAWS Sewer Block Map 182640
SAWS Sewer Block Map 184640
SAWS Sewer Block Map 184642
SAWS Sewer Block Map 186642



Cara C. Tackett, P.E.
Pape-Dawson Engineers



12/18/2020



	CLEAN OUT		OTHER		STUB OUT
	BREAK NODE		MONOLITHIC		STANDARD
	SIPHON INLET		JUNCTION BOX		AIR RELEASE
	SIPHON OUTLET		DROP MANHOLE		FLOW METER
	FLOW METER w/ SMART COVER		SMART COVER		
	AIRBYPASS		OUTFALL MAIN		PROP. MAINS
	SLUDGE		SIPHON MAIN		SEWER LATERALS
	FORCE MAIN		GRAVITY MAIN		PVT MAINS

"SAWS GIS Mapping: A wealth of information at your fingertips"

SEWER BLOCK MAP

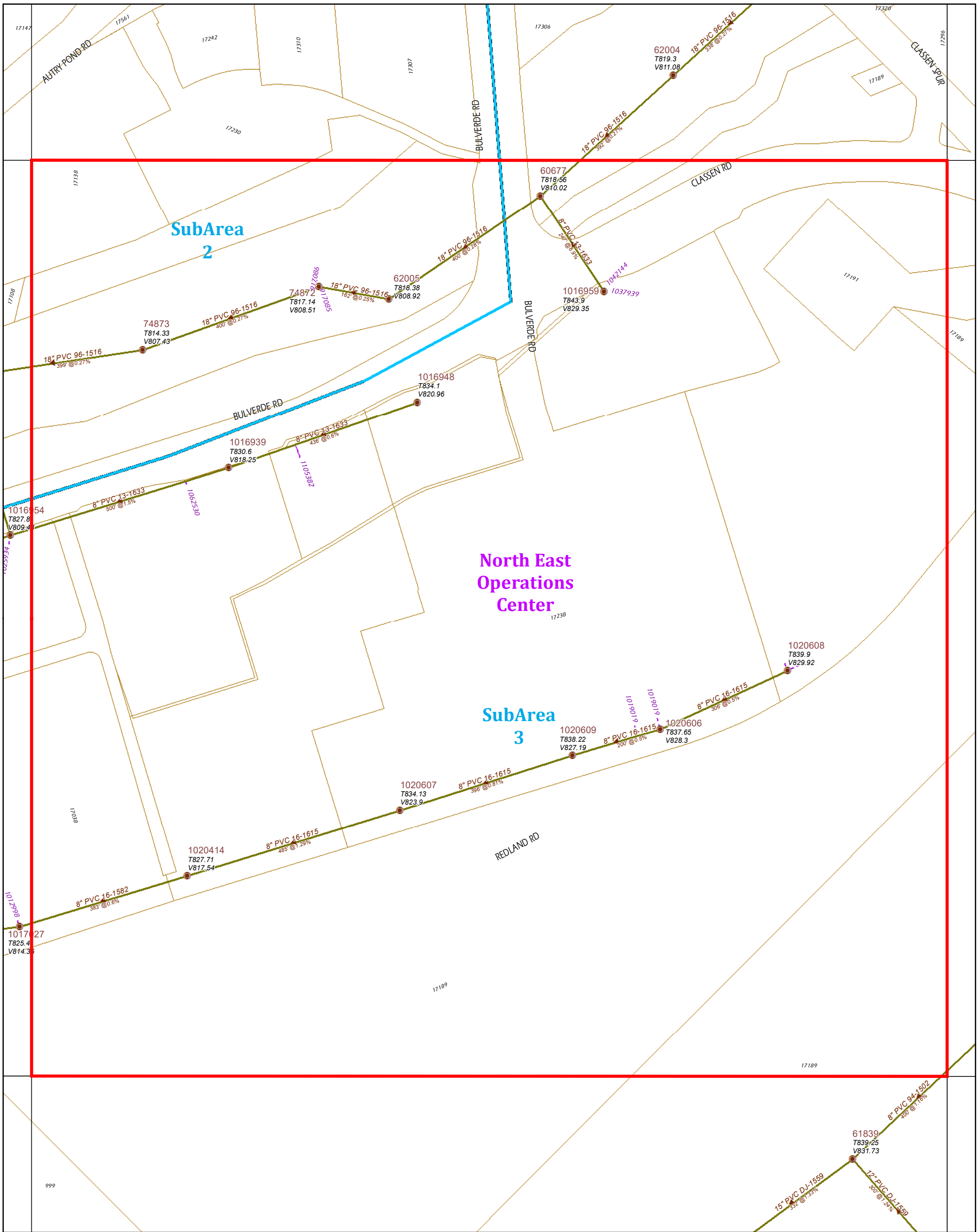
182640

SAN ANTONIO WATER SYSTEM
INFRASTRUCTURE PLANNING
GIS MAPPING DIVISION

Revised Date: Oct 08, 2020

Disclaimer:
This utility map is for reference only. The information may not represent what actually has been constructed. S.A.W.S explicitly disclaims any representation of the accuracy of the information and assumes no liability for any errors, omissions, or inaccuracies in the map regardless of how caused. Field verification should be done as necessary. S.A.W.S. prohibits the reproduction or sale of this document. This utility map may not under any circumstances, be copied, reproduced or published in any form or media, or transferred to another without written permission of the San Antonio Water System.

180	182	184
642	642	642
180	182	184
640	640	640
180	182	184
638	638	638



	CLEAN OUT		OTHER		STUB OUT
	BREAK NODE		MONOLITHIC		STANDARD
	SIPHON INLET		JUNCTION BOX		AIR RELEASE
	SIPHON OUTLET		DROP MANHOLE		FLOW METER
	FLOW METER w\ SMART COVER		SMART COVER		
	AIRBYPASS		OUTFALL MAIN		PROP. MAINS
	SLUDGE		SIPHON MAIN		SEWER LATERALS
	FORCE MAIN		GRAVITY MAIN		PVT MAINS

"SAWS GIS Mapping: A wealth of information at your fingertips"

San Antonio Water System

0 100 200 Feet

SEWER BLOCK MAP

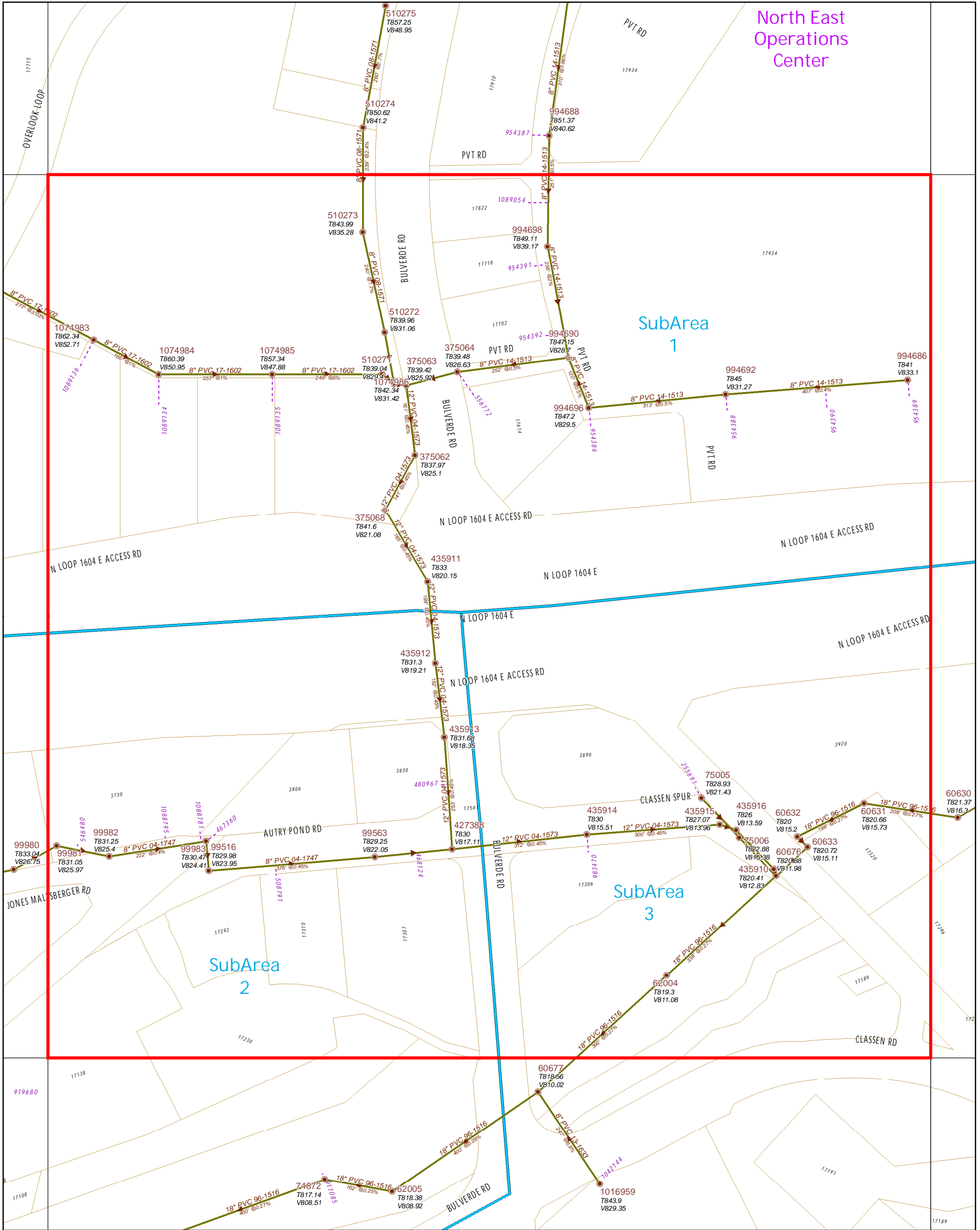
184640

SAN ANTONIO WATER SYSTEM
INFRASTRUCTURE PLANNING
GIS MAPPING DIVISION

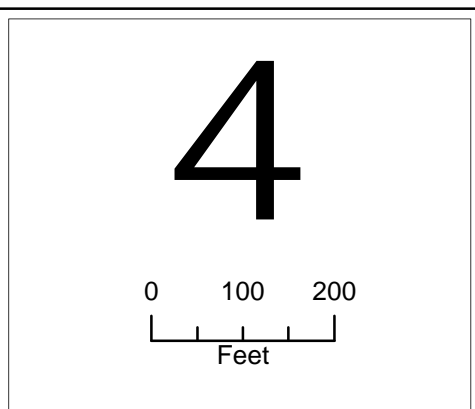
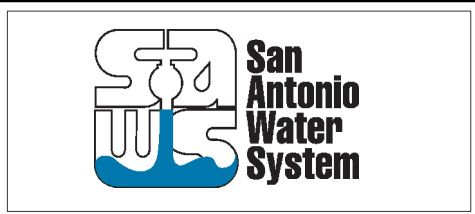
Revised Date: Nov 04, 2020

Disclaimer:
This utility map is for reference only. The information may not represent what actually has been constructed. S.A.W.S explicitly disclaims any representation of the accuracy of the information and assumes no liability for any errors, omissions, or inaccuracies in the map regardless of how caused. Field verification should be done as necessary. S.A.W.S. prohibits the reproduction or sale of this document. This utility map may not under any circumstances, be copied, reproduced or published in any form or media, or transferred to another without written permission of the San Antonio Water System.

182	184	186
642	642	642
182	184	186
640	640	640
182	184	186
638	638	638



B	BLOW OFF	ä	LIFT STATION	•	OTHER
\$	CLEAN OUT	•	MONOLITHIC	K	STUB OUT
¥	AIR RELEASE	•	JUNCTION BOX	Q	STANDARD
•	BREAK NODE	h	PLUG VALVE	#	AIR RELEASE
---	SIPHON INLET	⊕	DROP MANHOLE	@	FLOW METER
--	SIPHON OUTLET	A	FLOW METER w\ SMART COVER	S	SMART COVER
—2—	AIR BYPASS	—2—	OUTFALL MAIN	→	PROP. MAINS
—2—	SLUDGE	—2—	SIPHON MAIN	---	SEWER LATERALS
—2—	FORCE MAIN	—2—	GRAVITY MAIN	---	PVT MAINS




SEWER BLOCK MAP
184642

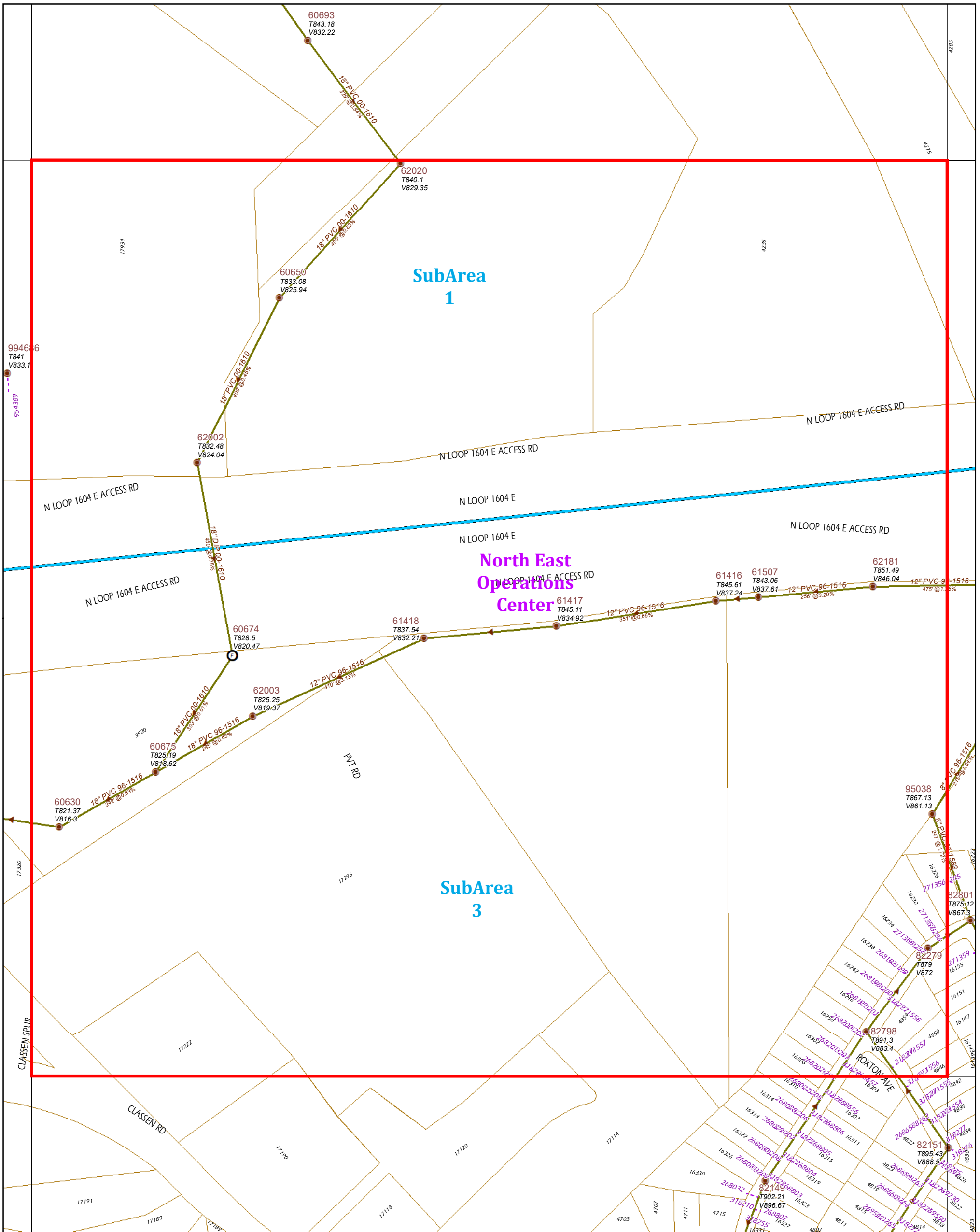
SAN ANTONIO WATER SYSTEM
INFRASTRUCTURE PLANNING
GIS MAPPING DIVISION

Revised Date: Jun 06, 2019

Disclaimer:
This utility map is for reference only. The information may not represent what actually has been constructed. S.A.W.S. explicitly disclaims any representation of the accuracy of the information and assumes no liability for any errors, omissions or inaccuracies in the map regardless of how caused. Field verification should be done as necessary. S.A.W.S. prohibits the reproduction or sale of this document. This utility map may not under any circumstances, be copied, reproduced or published in any form or media, or transferred to another without written permission of the San Antonio Water System.

182 644	184 644	186 644
182 642	184 642	186 642
182 640	184 640	186 640





	CLEAN OUT		OTHER		STUB OUT
	BREAK NODE		MONOLITHIC		STANDARD
	SIPHON INLET		JUNCTION BOX		AIR RELEASE
	SIPHON OUTLET		DROP MANHOLE		FLOW METER
	FLOW METER w\ SMART COVER		SMART COVER		
	AIRBYPASS		OUTFALL MAIN		PROP. MAINS
	SLUDGE		SIPHON MAIN		SEWER LATERALS
	FORCE MAIN		GRAVITY MAIN		PVT MAINS

"SAWS GIS Mapping: A wealth of information at your fingertips"

SEWER BLOCK MAP

186642

SAN ANTONIO WATER SYSTEM
INFRASTRUCTURE PLANNING
GIS MAPPING DIVISION

Revised Date: Oct 08, 2020

Disclaimer:
This utility map is for reference only. The information may not represent what actually has been constructed. S.A.W.S explicitly disclaims any representation of the accuracy of the information and assumes no liability for any errors, omissions, or inaccuracies in the map regardless of how caused. Field verification should be done as necessary. S.A.W.S prohibits the reproduction or sale of this document. This utility map may not under any circumstances, be copied, reproduced or published in any form or media, or transferred to another without written permission of the San Antonio Water System.

184	186	188
644	644	644
184	186	188
642	642	642
184	186	188
640	640	640